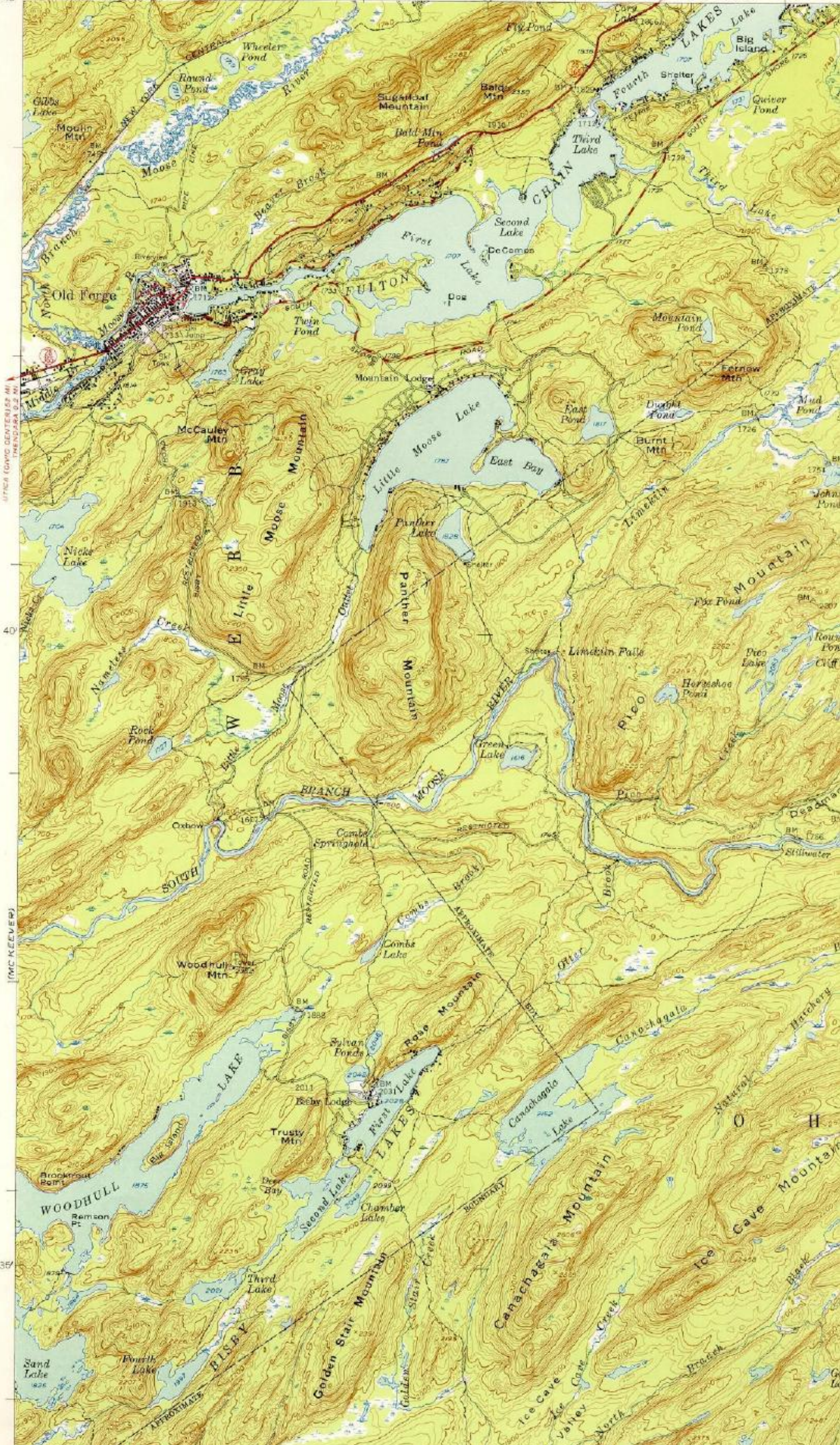


UNITED STATES
DEPARTMENT OF THE INTERIOR
GEOLOGICAL SURVEY

BLUE MOUNTAIN LAKE 28 MI
EAGLE BAY 2.9 MI
(BIG MOOSE)

75°00'
43°45'



NUMBER FOUR

(MC KEEVER)

35

40

UTM (GMC CENTERISE MI)
THENDARA 0.2 MI